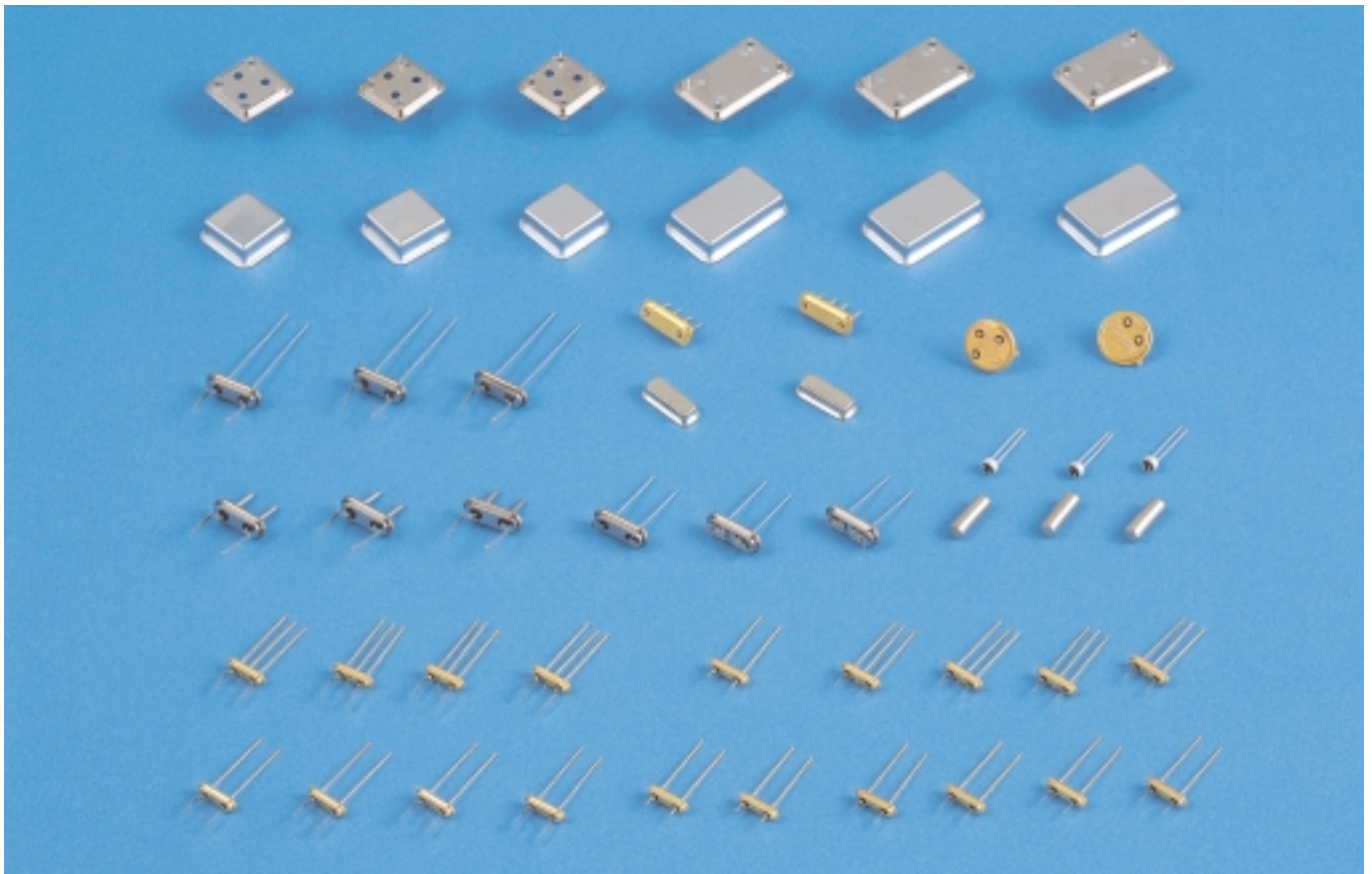


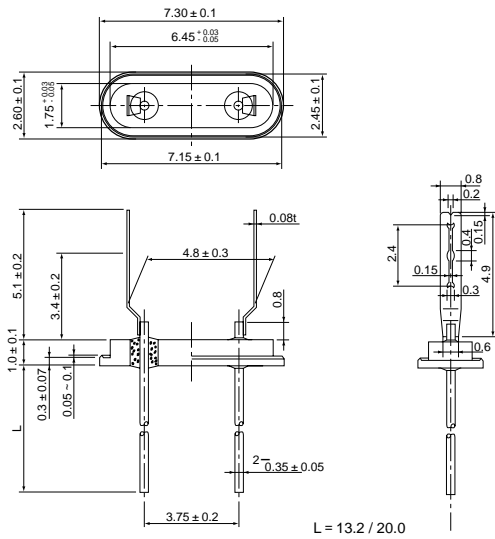
4 METAL BASE

1. UM-Type
2. MCF-Type
3. HC-49/u-S-Type
4. HC-49/U & 50/U-Type
5. SAW FILTER-Type
6. OSCILLATOR-Type
7. CYLINDER-Type

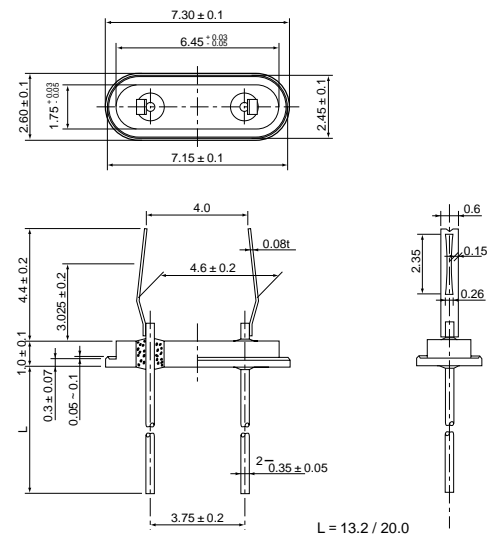


1. UM-Type

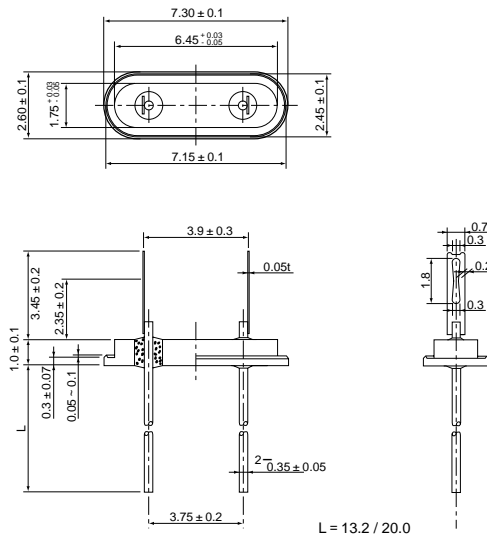
UM-1 2P2L (5.5 φ)



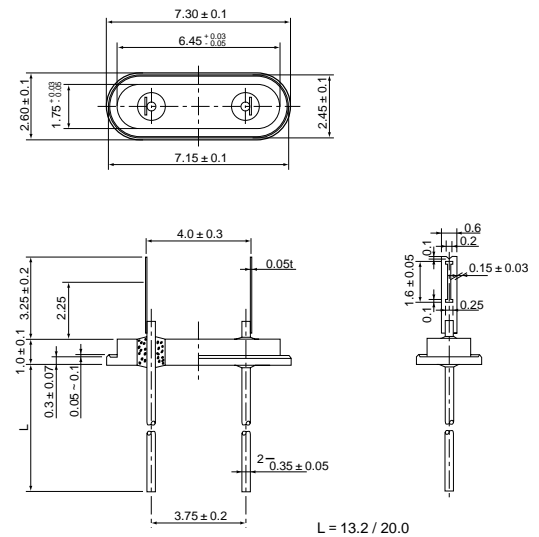
UM-1 2P2L (5.2 φ)



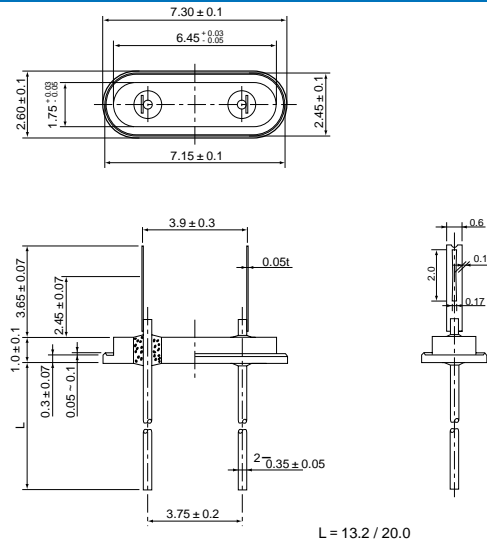
UM-5 2P2L (4.5 φ)



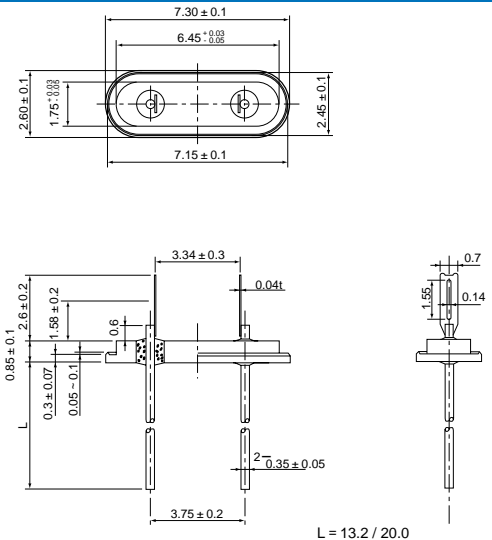
UM-5 2P2L (4.5 φ)



UM-5 2P2L (4.5 φ)

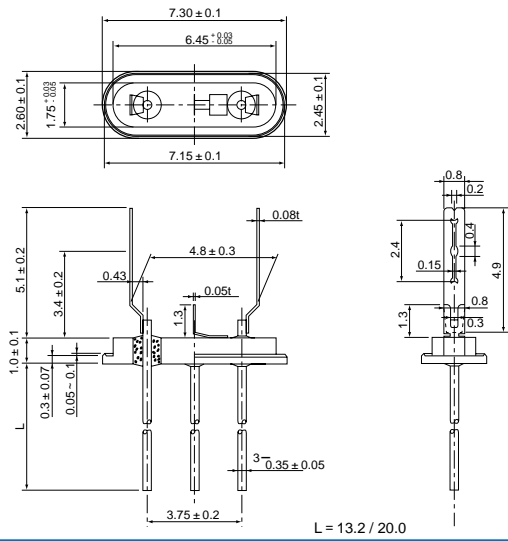


UM-4 2P2L (4.0 φ)

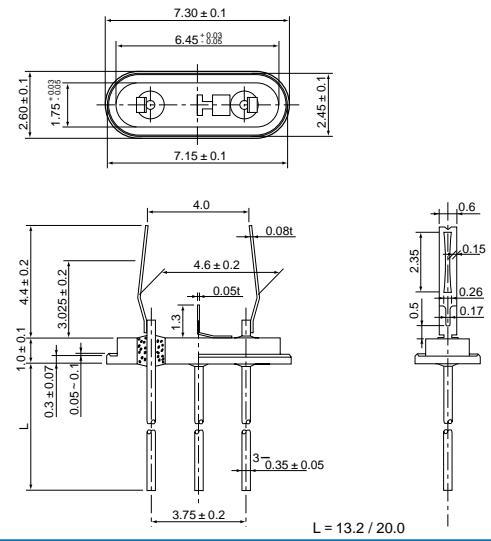


2. MCF-Type

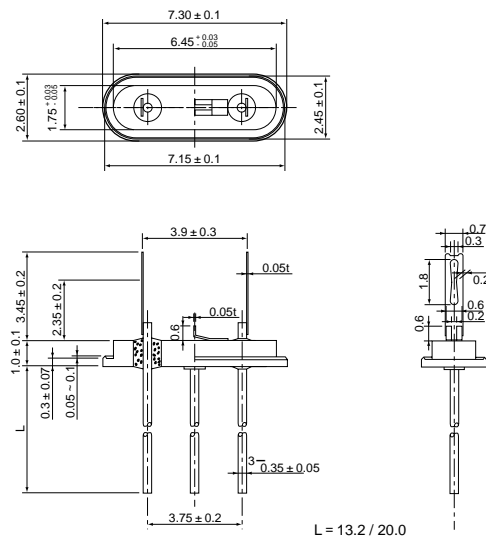
UM-1 3P3L (5.5 φ)



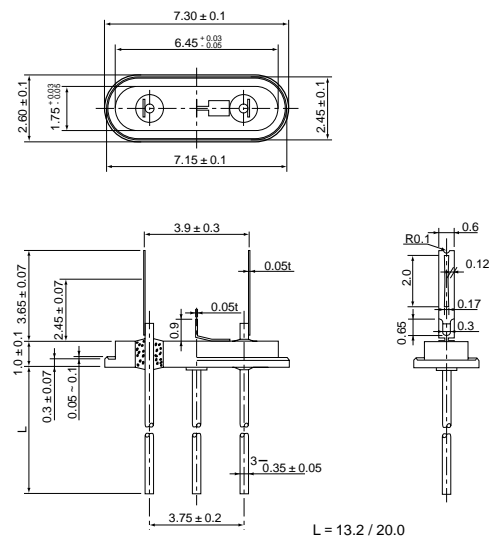
UM-1 3P3L (5.2 φ)



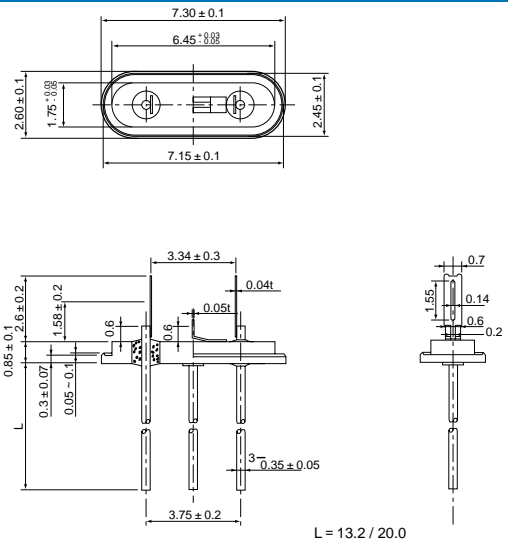
UM-5 3P3L (4.5 φ)



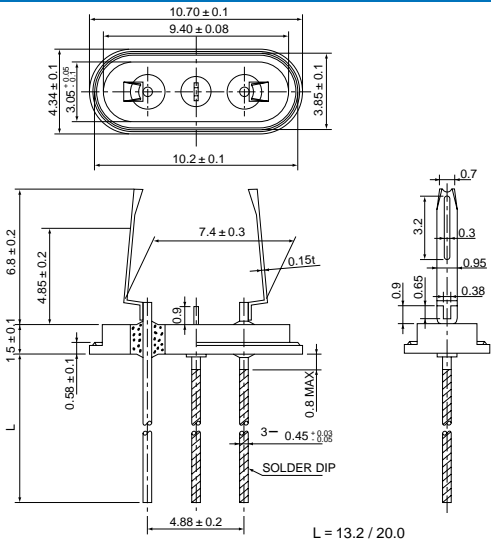
UM-5 3P3L (4.5 φ)



UM-4 3P3L (4.0 φ)

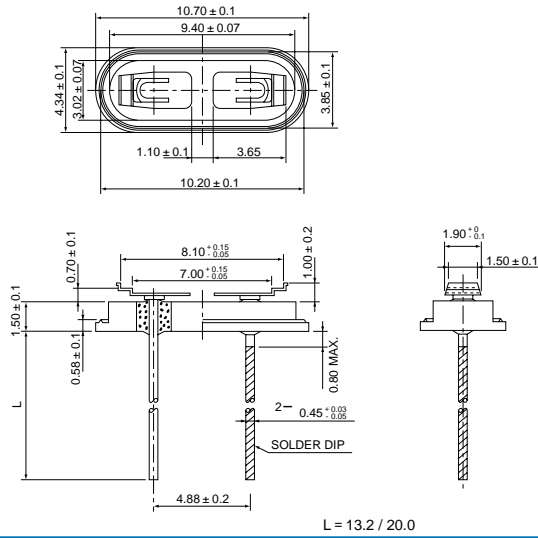


HC-49/U 3P3L (8.0 φ)

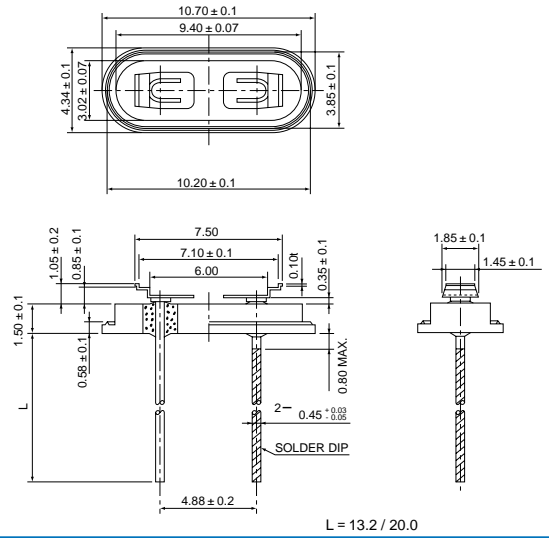


3. HC-49/u-S-Type

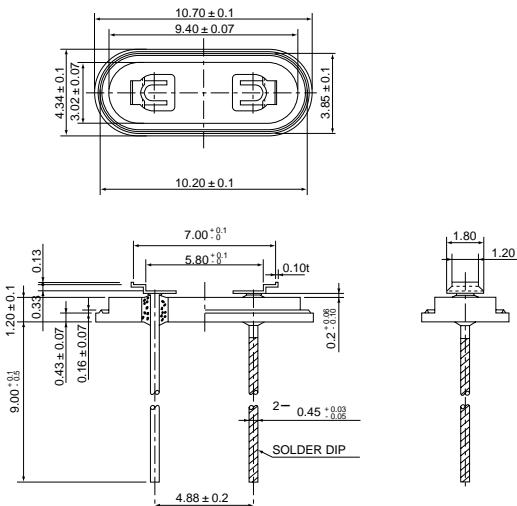
HC-49/u-S (1.5t)



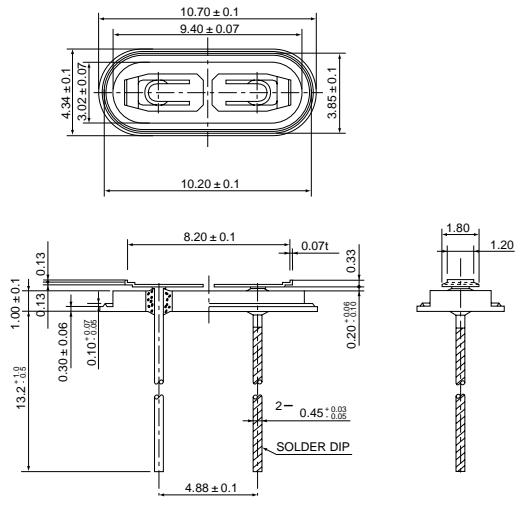
HC-49/u-S (1.5t)



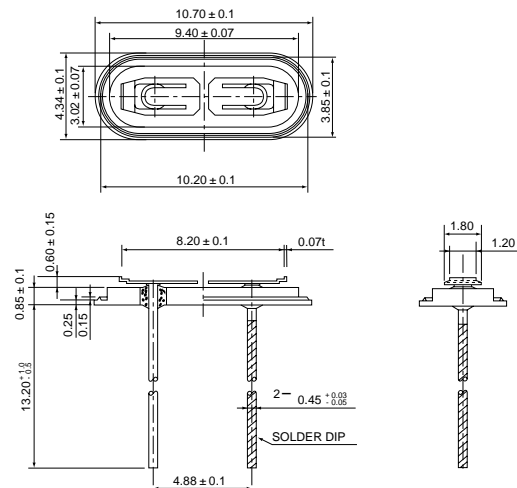
HC-49/u-S (1.2t)



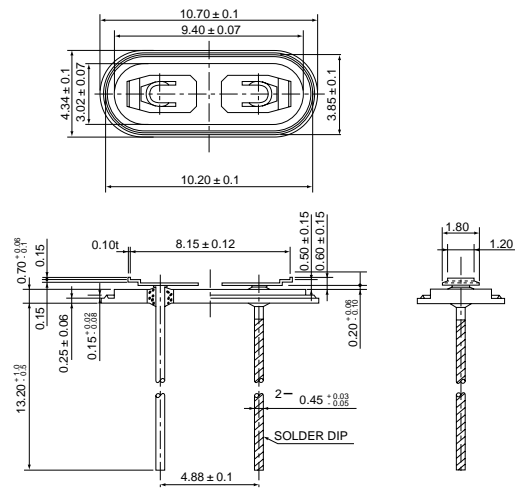
HC-49/u-S (1.0t)



HC-49/u-S (0.85t)

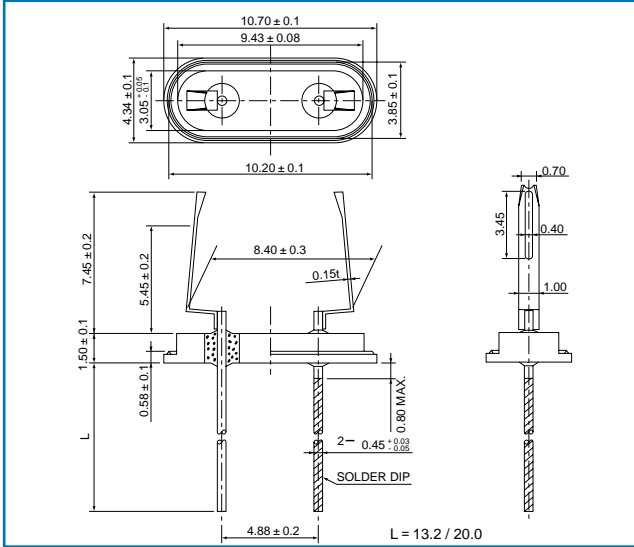


HC-49/u-S (0.7t)

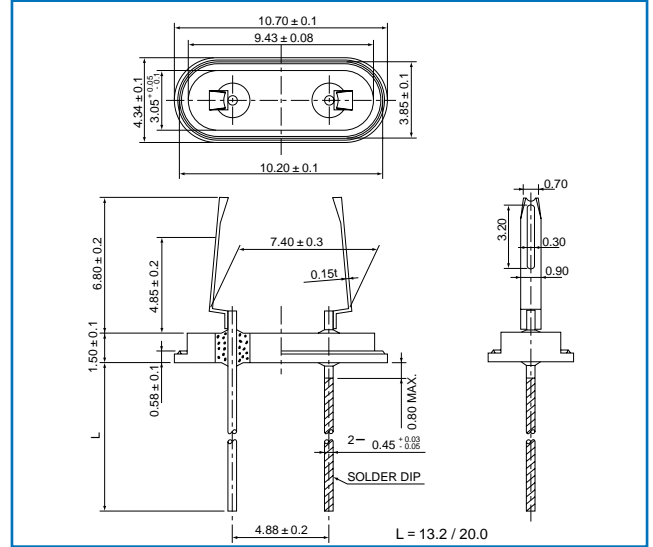


4. HC-49/U & 50/U-Type

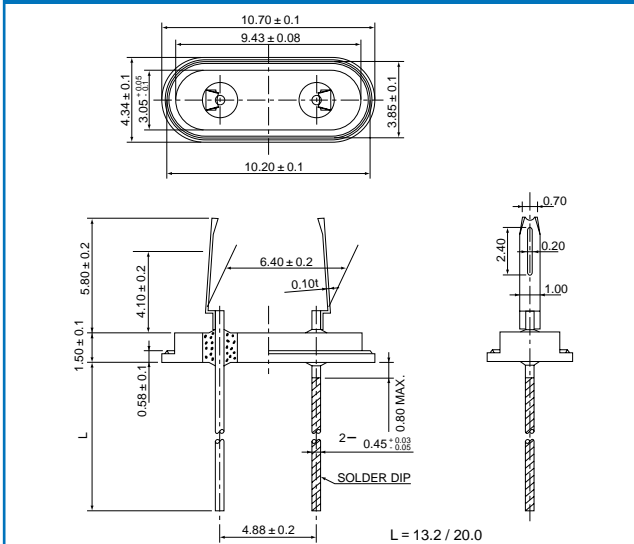
HC-49/u-S (1.5t)



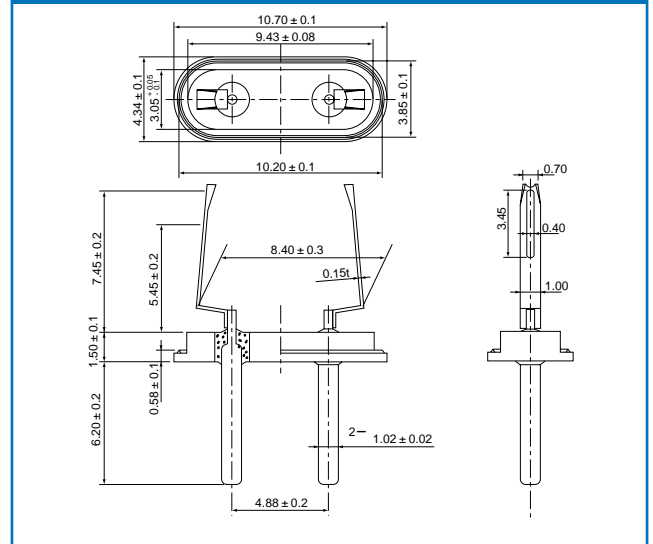
HC-49/u-S (1.5t)



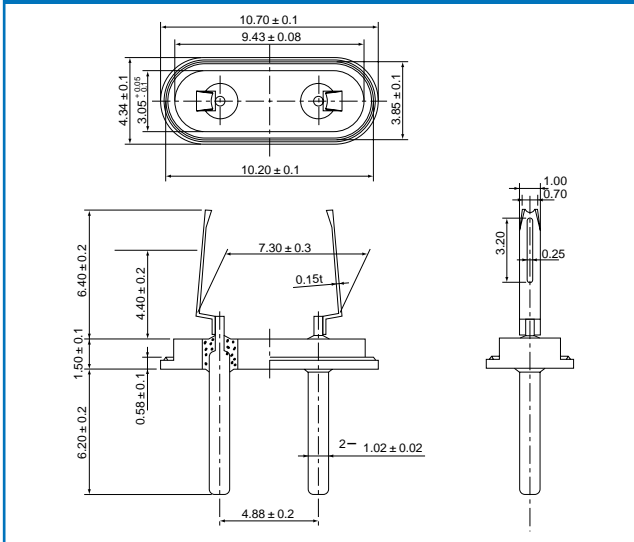
HC-49/u-S (1.2t)



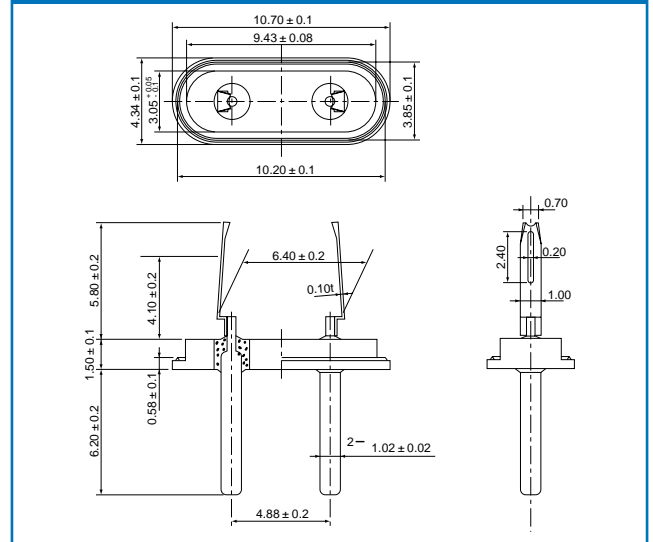
HC-49/u-S (1.0t)



HC-49/u-S (0.85t)

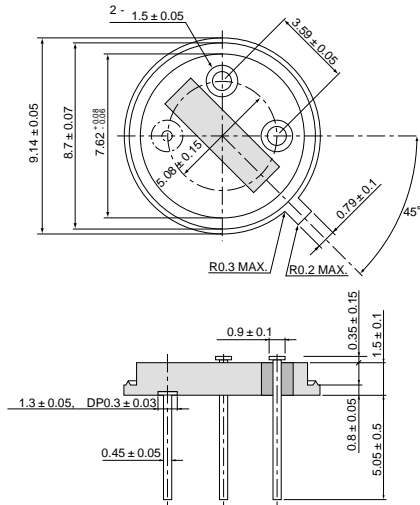


HC-49/u-S (0.7t)

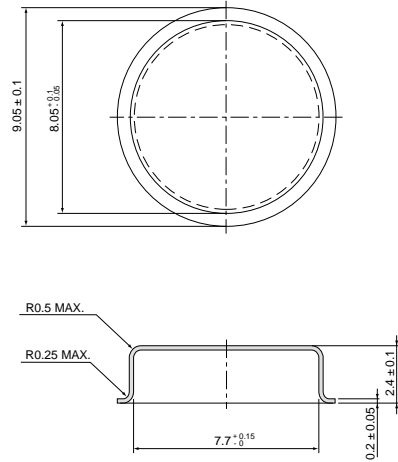


5. SAW FILTER-Type

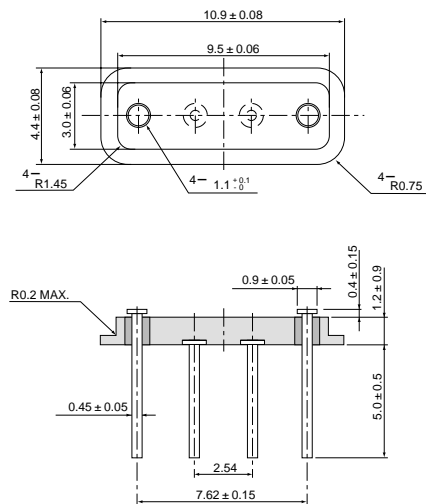
TO-39 STEM



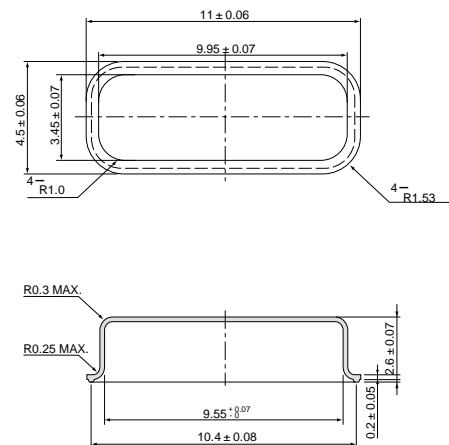
TO-39 COVER



F-11 STEM

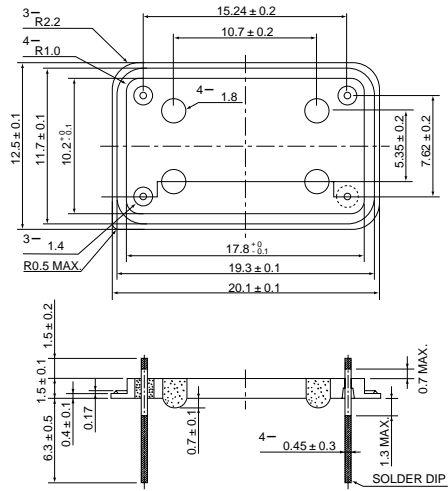


F-11 COVER

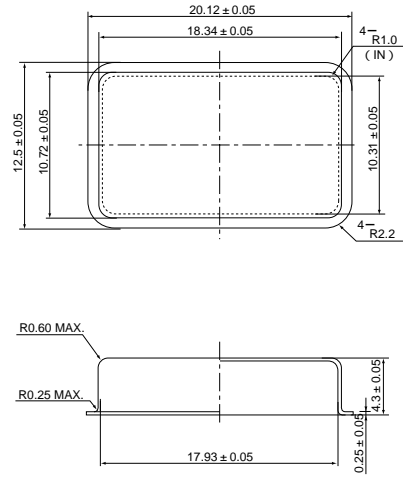


6. OSCILLATOR-Type

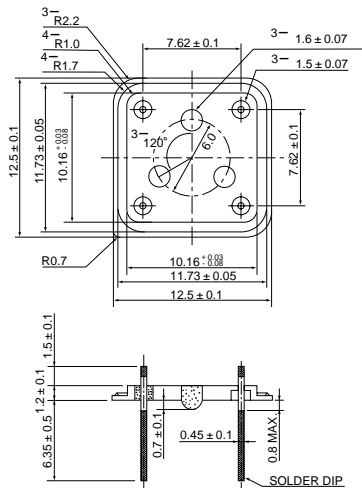
OSC FULL SIZE



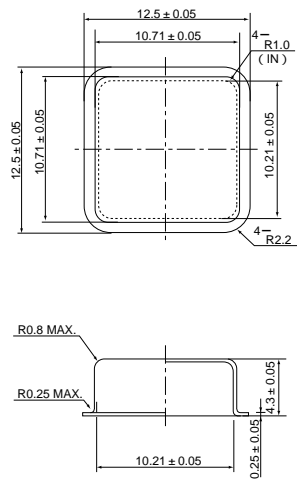
OSC COVER (FULL SIZE)



OSC HALF SIZE

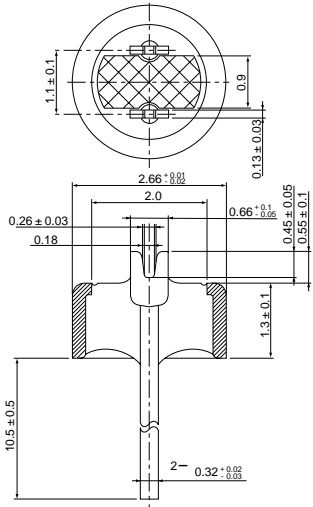


OSC COVER (HALF SIZE)

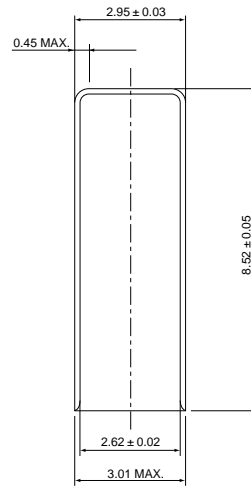


7. CYLINDER-Type

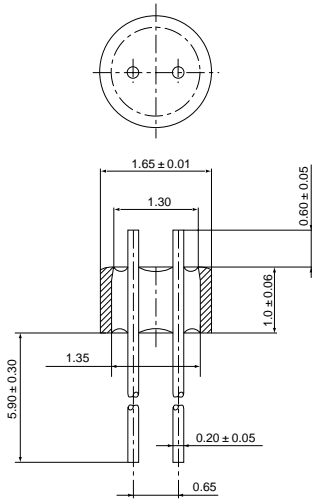
3×8 STEM



3×8 CAN



2×6 STEM



2×6 CAN

